

ISSN: 2360 - 9753

Bloomfield Academic Society

[www.bloomfielddeducation.com](http://www.bloomfielddeducation.com)

---

**ISOLATION AND CHARACTERIZATION OF 13- BENZYL ETHYL METHYL ABIETATE FROM THE LEAF OF  
*PENTACLETHRA MACROPHYLLA.* ( *P.BENTH* )**

By

Irenus Chinonye IWU

Department of Chemistry, Federal University of Technology, Owerri, Nigeria

-

Christopher Onyemeziri ALISA

Department of Chemistry, Federal University of Technology, Owerri, Nigeria

-

Uche ONU

Department of Chemistry, Federal University of Technology, Owerri, Nigeria

---

**Abstract:** As part of our study on the bioactive agents from *Pentaclethra macrophylla* tree, P.Benth (oil bean tree), 13- benzyl ethyl methyl abietate was isolated from its leaves. The structure was elucidated using spectra obtained from NMR spectroscopy in combination with IR and MS. its molecular formula is C<sub>26</sub>H<sub>32</sub>O<sub>2</sub> with molecular weight 376, calculated for M/z 375.29. The IR spectrum showed absorptions of aliphatic carbon, (2924.85, 2855.09cm<sup>-1</sup>), carbonyl group, (1736. 68 cm<sup>-1</sup>), aromatic (1457.97 cm<sup>-1</sup>) and ether (1466.20 cm<sup>-1</sup>). The fragmentation pattern was also determined

**Key words:** *pentaclethra macrophylla*, bioactive agents, molecular formula. Fragmentation pattern

---

## INTRODUCTION

*Pentaclethra macrophylla* contains many phytonutrients, which include; alkaloids, saponins, flavonoids and tannins, (Okwu and Aluwo, 2008). The extracts from the stem bark of this plant is used to treat leprosy sores. The seed when cooked and fermented is used in preparing delicacies (Asoegwu *et al.*, 2006). The leaf and stem extracts are applied in the treatment of diarrhea while the pod and leaf extracts are used in the treatment of convulsion. *Pentaclethra macrophylla* is a native of both West and Central Africa. It occurs mainly in Nigeria, Cameroon, Cote D ivoire, Togo, Congo, Senegal and Angola. It also occurs in the island of Sao Tome and Principe. It is endemic in the humid and some part of the sub humid zones of West Africa (Keay, 1989).. The pods contain 6-10 flat glossy brown seeds which may vary in size. The seeds are up to 7 cm long (Abbiw, 1990). The seed of this plant when crushed and eaten with red ants can induce abortion, (Abbiw, 1990, Isawumi, 1993, Tico ,2005) .The bark of this tree is used to treat leprosy sores. The seed is rich in alkaloids, saponins, flavonoid phenols and tannins (Okwu and Aluwuo, 2008) . The tree yields forest products for making household utensils (Okafor, 1987). The mature dispersed seeds are harvested and sold in the market and may serve as a revenue earner. The seed could serve as protein supplement, (Enujiugha and Agbede,2000) .Its richness in vitamins and minerals makes it a highly sought after food supplement for both local consumption and export. The

seed serves as source of oils for candle making, cooking and soap making ( Tico, 2005).The fruits, seed and leaves are used as anthelmintics, for gonorrhoea treatment and for convulsion as well as analgesics. (Bouquet *et al*, 1971, Iwu *et al*, 1990). The leaves of this plant when boiled with bush pepper produce a liquid given for the treatment of fever and pains in animals and man and improves the anti inflammatory response. (Okorie, *et al*, 2009). Oil from the leaves has anti inflammatory qualities and aid in wound management. Increased intake of the seed as food increases the hemoglobin value in animals, increased oxygenation of tissue, enhances specific hormone and stimulates the production of red blood cells important in proper cardiac function. The plant is a source of dietary estrogens (phyto estrogens) which can be employed as nutritional supplement as well as pharmaceutical and vitamin supplement in the control of obesity. The seed of *Pentaclethra macrophylla* contains very many organic compounds. Okwu and Aluwo ( 2008) have identified permaric acid and proline from the seed. The lactans of permaric acid is hydrolyzed under a variety of acidic conditions to afford adipic acid derivative which closes under acidic conditions to give substituted pecolic acid. The root bark is used as a laxative, an enema against dysentery and as a liniment against itching. The seed and leaf extracts have shown both anti-inflammatory and analgesic properties, (Iwu,1993). Agbogidi (2010), has shown that the germination of the seed is highly hindered in soils contaminated with spent lubricating oils but this plant shows soil improvement properties (Akindahunsi, 2004)

## **AIM OF RESEARCH**

The use of the leaf of *Pentaclethra macrophylla* in the treatment of various diseases by traditional medical practitioners in Nigeria is very rampant, their claims of its efficacy has not been properly verified. This work is therefore tailored to identify and structurally elucidate the bioactive components of the leaf of *pentaclethra macrophylla*.

## **MATERIALS AND METHOD**

### **Plant materials**

The samples were obtained from a farm land in Ezinihitte Mbaise area of Imo state, they were identified by Dr .Nmeregini of forestry department Michael Okpara University of Agriculture Umudike , the voucher specimen were deposited in the Forestry department Herbarium of Michael Okpara University Umudike. The sample were washed with distilled water and room dried .The dried samples were milled with an electric milling machine and stored in air tight plastic bottles and kept for analysis

### **Extraction and Isolation.**

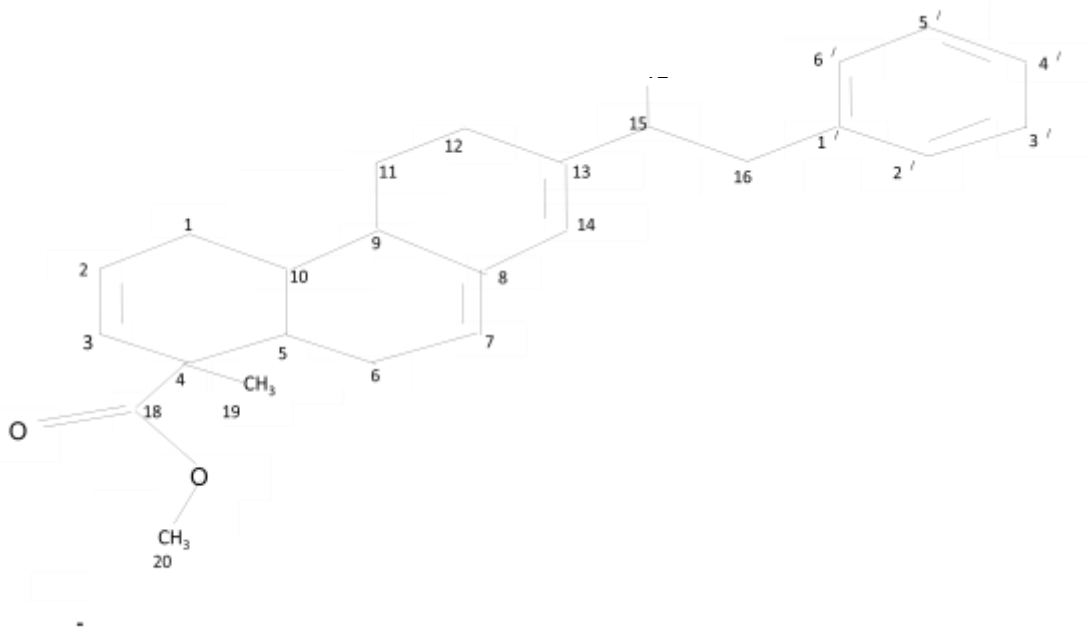
800 g of the ground sample was percolated in 95 % Ethanol for 48 hrs and filtered. The filtrate were concentrated using rotary evaporator regulated at 40 °C to get a dark extract, (28.6 g). The crude extract was partitioned between chloroform and water to afford chloroform soluble fraction 16.2 g. The Chloroform extract was subjected to column chromatography over silica gel and eluted with Diethyl ether, 100 cm<sup>3</sup>, followed by varying volumes of diethyl ether/chloroform mix and later with chloroform /methanol mix and the fractions were labeled. The fractions were subjected to thin layer chromatography using silica gel 60 G and iodine vapour for development. Compound 1 (0.2g) was obtained using diethyl ether /chloroform mix which appeared as only one spot.

### **General Procedure for Spectroscopic Determination:**

IR Spectrum was determined on a thermo Nicolet Nexus 470 FR-IR spectrometer. The <sup>1</sup>H and <sup>13</sup>C NMR spectra were obtained on a Bruker Avance 400 FT NMR Spectrometer using tetra methyl silane as internal standard. Chemical shifts are expressed in  $\delta$  values. LC – ESIMS spectra were determined in the positive ion mode on a PE. Biosystem API 156 single quadruple instrument. HRESIMS (positive ion mode) spectra were recorded on a thermo Finniga MAT 95 x L Mass spectrometer. Column Chromatography was carried with silica gel (200 – 300 mesh) and the preparation separations was monitored analytically by using thin layer chromatography (TLC) at room temperature on precoated 0.25 mm thick gel 60 F<sub>254</sub> Aluminium plates 20 x 20 cm Merck, Darmstadt Germany. Reagents and solvents such as Ethanol, chloroform, diethyl ether and Hexane were all of analytical grade and procured from Merck Darmstadt Germany

### **RESULTS AND DISCUSSION**

Compound [1] was isolated as brown oil (0.2) g. From the analysis of its IR, <sup>1</sup>H NMR, <sup>13</sup>C NMR and HREIMS spectra, its molecule formula is C<sub>26</sub>H<sub>32</sub>O<sub>2</sub> with molecular weight of 376 calculated for M/z 375.29



Compound

1; *13-benzyl ethyl methyl abietate*

The IR spectrum showed absorptions of aliphatic carbon, (2924.85, 2855.09 $\text{cm}^{-1}$ ), carbonyl group, (1736.68  $\text{cm}^{-1}$ ) aromatic (1457.97  $\text{cm}^{-1}$ ) and ether (1466.20  $\text{cm}^{-1}$ ). Table (1.0)

Table 1.0 IR absorption analysis of compound [1]

IR absorptions ( $\text{cm}^{-1}$ )	functional group	compound type
2924.85	-CH <sub>2</sub>	Aliphatic
2855.09	-CH <sub>2</sub>	Aliphatic
1736.68	C=O	Carbonyl
1457.97	C=C	aromatic
1166.20	C-O	ether

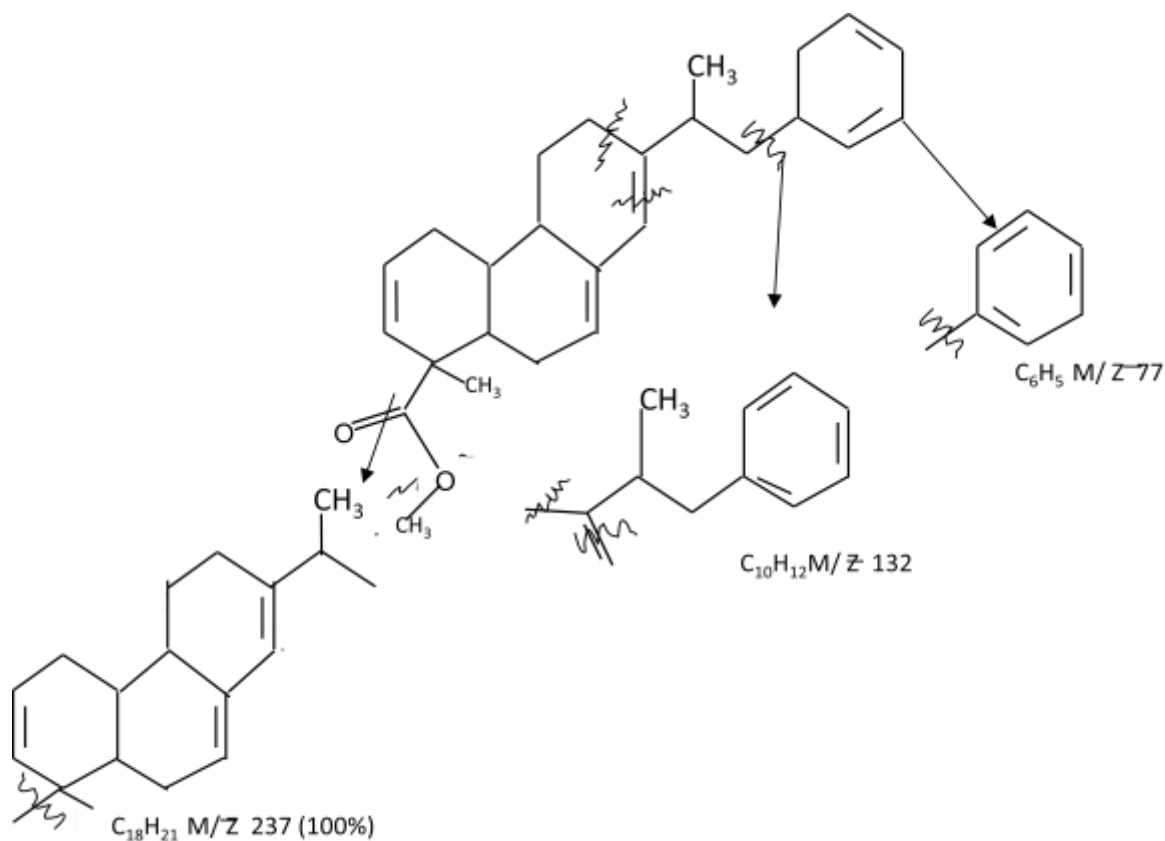
Analysis of the HNMR spectrum of compound [1] is shown in table (2.0), the spectrum showed signals of tertiary methyl at  $\delta\text{H}$  0.882 and 0.876. The absorptions of the methylene protons are obtained from the following peaks; 1.266, 1.238, 1.224, 1.213, 1.331 and 1.307. The methine protons showed their absorption peaks at  $\delta\text{H}$  1.603 and 1.523. Analysis of <sup>13</sup>CNMR spectrum is shown in table (2.0); the spectrum gave the resonance of the aromatic chemical shifts at  $\delta\text{C}$  125.29 –

129.89. The methyl carbon chemical shifts are observed at  $\delta\text{C}$  19.15, 19.20 and 77.40. Absorptions of the methine carbons are shown at  $\delta\text{C}$  32.78 and 32.74

Table 2.0  $^1\text{H}$ NMR AND  $^{13}\text{C}$ NMR Analysis of compound [1]

	$\delta\text{C}$		$\delta\text{H}$	
1.	22.90	CH	1.266	2Hd
2.	128.13	=CH	2.300	1 Hm
3.	127.83	=CH	2.257	1Hm
4.	22.55	C	-	-
5.	32.78	CH	1.603	1Hm
6.	22.87	CH <sub>2</sub>	1.238	2Hm
7.	126.02	=CH	5.269	1Hm
8.	125.29	=CH	2.347	1Hm
9.	32.74	CH	1.523	1Hm
10.	35.93	C	-	-
11.	22.70	CH <sub>2</sub>	1.224	2Hm
12.	22.63	CH <sub>2</sub>	1.213	2Hm
13.	128.13	C	-	-
14.	127.83	=CH	2.257	1Hm
15.	19.15	CH <sub>3</sub>	0.882	3Hm
16.	22.55	CH <sub>2</sub>	1.331	2Hm
17.	21.29	CH <sub>2</sub>	1.307	2Hm
18.	137.74	C=O	-	-
19.	19.20	CH <sub>3</sub>	0.876	3Hm
20.	77.40	OCH <sub>3</sub>	2.347	3Hm
1 <sup>1</sup>	129.89	C	-	-
2 <sup>1</sup>	129.89	C	-	-
3 <sup>1</sup>	129.02	CH	7.052	1Hm
4 <sup>1</sup>	128.89	CH	5.269	1Hs
5 <sup>1</sup>	128.28	CH	2.341	1Hm
6 <sup>1</sup>	128.21	CH	2.308	

The fragmentation pattern of compound [1] is shown below. Detachment of the benzyl fragment from the compound afforded the peak with M/z 77, (C<sub>6</sub>H<sub>5</sub>). Another detachment of C<sub>9</sub>H<sub>9</sub> gave the peak with M/z 117 while the detachment of the fragment C<sub>19</sub>H<sub>24</sub> afforded the base peak with M /z 251 calculate for M/z 252. These data suggest that compound [1] is a methyl abietate with benzyl methyl linkage at C<sub>13</sub>



Fragmentation pattern of compound 1

Benzyl ethyl methyl abietate is an ester derivative of abietic acid. This compound has been found in pine tree, isolatable chromophores, the carboxyl group and the butadiene unit. The compound is chiral with four stereogenic centre and can be precipitated as diamylammonium salt; acidification of the salt liberates abietic acid. The acid is oxidized when stored in an air inclusive container. Berger and Dieter (2009).

Abietic acid has a history of been used in the making of mystic smoke and as part of Greek fire, (liquid fire), a feared incendiary in the Byzantine empire as a weapon of attack and defense. Abietic acid has irritating effect when exposed to the skin. Its usefulness is in soldering where it is added to soldering wire to make flux. Harris and Sanderson (1992)

## CONCLUSION

The investigations into the leaf extract of *pentaclethra macrophylla* has given rise to the isolation of benzyl ethyl methyl abietate. This work has enabled the compound to be fully characterized as its molecular weight and structure has been determined. The

compound so identified is an ester of abietic acid. This compound no doubt plays an important role in the use of the leaf of this plant for treatment of certain disease by traditional medicine practitioners.

## REFERENCES

- Abbiw,D.(1990). Useful plants of Ghana. Intermediate Technology Publications and the royal. Botanical garden Kew 440 pages
- Agbogidi, M.O. (2010).Response of African oil Bean, *Pentaclethra macrophylla* to Soils Contaminated with spent lubricating oil. African Journal of Environmental Science and Technology 5:492-494
- Akindahusi, A.A. (2004 ). Physiochemical studies on African Oil Bean *Pentaclethra macrophylla*Benth. J.Food, Agric Environ 17;202-208
- Asoegwu, S.N, Ohanyere, S.O, Kanu, O.P, and Iwueke, C.N. (2006) .Physical properties of African oil bean seed (*Pentaclethra macrophylla*) Agricultural Engineering international. The CIGR E Journal iii
- Berger. S and Dieter. S, (2009) Classics in Spectroscopy, isolation and structure elucidation of natural products. Wiley VCH Verlag GMBH and Co. KGaA. 459- 500
- Bouquet,A, Cave, G, Paris ,R. ( 1971). Plantes Medicinales du Congo Brazaville(iii) Plantes Medicinales et Phyto therapic Tom 2 :154-158
- Enujiugha,V.N. and Agbede,J.O.(2000). Nutitional and antinutritional characteristics of African Oil Bean *Pentaclethra Macrophylla*Benth seed. Applied Tropical Agriculture 5:11-14
- Harris. G. C and Sanderson.T. F. 1992 Abietic acid, Organic Synthesis 32. 1-4
- Isawumi,M.A.(1993) .The common edible fruits of Nigeria part ii. The Nigerian fields 58 : 34 64
- Iwu, M.M, Duncan, A.R,and Okunji, O.O (1990).New antimicrobial of plant Origin in Janick .J (ed) Perspectives in new crops and new uses ASHS press Alexandra .V.A. 564
- Iwu,M.M. (1993). Handbook of African Medicinal Plants. CRC Press, Boca Rton Florida 263 pages
- Keay , R.W.J. (1989). Nigerian Trees. Claredon press UK. 281
- Okafor, J.C. (1987) .Diversification of the Nigeria food basket through the increased use of indigenous fruits and vegetables .Paper presented at the Training Workshop on Massive Cultivation of Friuts and Vegetable in Anambra State at Enugu Municipal Council 40pages

Okorie ,C.C, Oparaocha, E.N.T, Adewummi,C.O. ,Iwalewa ,E.O. Omodara,S.K. (2009), Antinociceptive ,anti inflammatory and cytotoxic activities of *pentaclethra macrophylla* aqueous extract on Mice .African journal of Traditional complementary and alternative medicine 1: 44-53

Okunrobo, L.O. Ching, F.P. and Ifijeh, F.(2009).Antinociceptive activity of methanol extract and aqueous fractions of the stem bark of *Pentaclethra macrophylla* (Benth) Mimosaceae Journal of Medicinal Plants Research 3 (3) :101-104

Okwu, D.E and Aluwuo .C.J. (2008). Studies on the phytochemical composition and fermentation of the seed of African oil bean tree *pentaclethra macrophylla* Benth Int.journal of chemical societies 6 (2) :773-788

Tico, Etnobotanical dictionary (2005). *Pentaclethra macrophylla* (Benth).<http://www.ars.grins.gov/duke/dictionary/Tico/p.html>.

#### **ABOUT THE AUTHORS**

**Iwu Irenus Chinonye** (PhD), is a senior lecturer with the department of Chemistry Federal University of Technology Owerri .He majors in natural product chemistry (organic chemistry) and has carried out many researches in this area. He has a lot of publications to his name and as at present he is researching into the usefulness of plant essential oils in pharmaceutical, perfumery and insecticidal industries. He has been involved in personal and joint researches. His major interest is the use of alternative medicine in eradication diseases and the poor and less privileged members of the Nigerian populace

**Christopher Onyemeziri Alisa**,is a senior lecturer with Chemistry Department ,Federal University of Technology ,Owerri Nigeria. His bias is Analytical/ Environmental Chemistry and is into Flavonoid chemistry. His area of interest is in the use of flavonoids and other antioxidants in fight against carcinogens in local consumables in Nigeria.

**Uchenna Onu** is a staff of Chemistry Department working with Dr. I. C. Iwu. She is a graduate attaché and is currently undergoing a Ph.D research work.